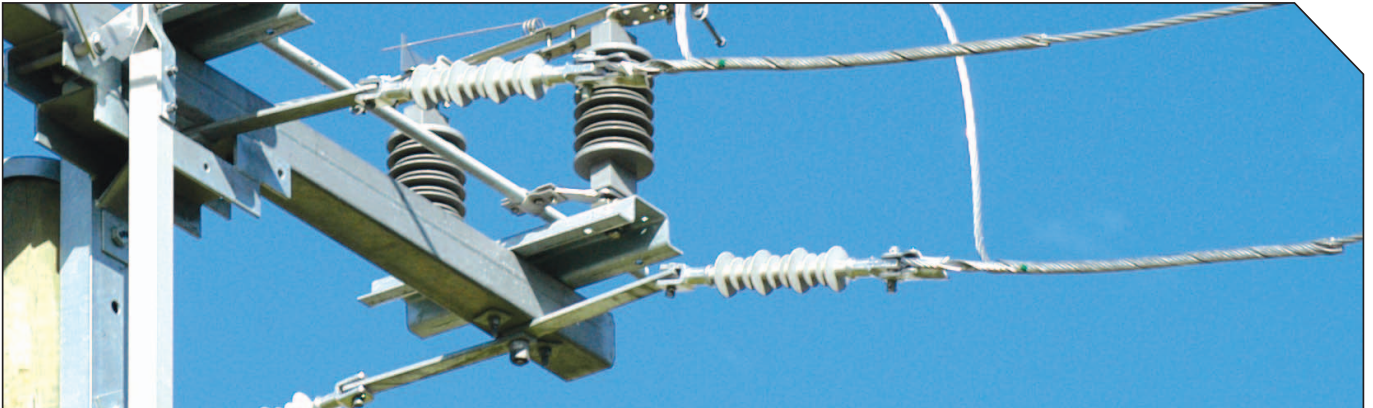
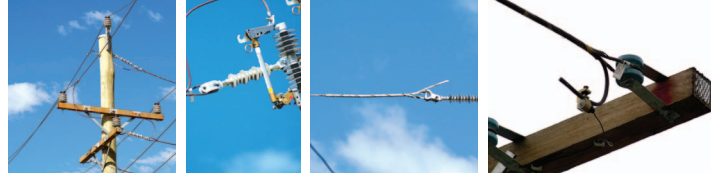


# PREFORMED™ Deadend Grip

## General Recommendations



The preformed deadend is designed to grip uniformly to prevent distortion of the conductor. It also offers a unique design that eliminates bolts, nuts, washers and other component parts that may become lost or damaged during installation or in service. Deadends should be used only on the size and type of conductors for which they are designed. They must have the same lay as the conductor to which they are being applied. All deadend fittings have colour coded markings to indicate starting point for application and to assist in identification. Colour codes are as per AS1154.3

For Application Procedures, visit the PLP website.  
[www.preformed.com.au](http://www.preformed.com.au)

### SAFETY CONSIDERATIONS

- This product is intended for a single (one-time) use and for the specified application, although it may be re-applied twice for retensioning within 90 days from initial installation.
- Do not modify this product in any way.
- This product is intended for use by qualified linesmen only.
- When working in the area of energised line with this product, extra care should be taken to prevent accidental electrical contact.
- For proper performance and personal safety, be sure to select the proper sized PREFORMED™ products before application.
- PREFORMED™ products are precision devices. To ensure proper performance, they should be stored in cartons under cover and handled carefully.