

# Cable Clamps & Blocks



## Plastic Substation Cable Clamp Single



**PSCCS**

The Single Hole type cable clamps fasten a wide range of single and multi conductor low and high voltage cables. Designed to provide superior mechanical strength, ideal for installations where cables are subject to short circuits. The wide contact area provides a controlled pressure on the cable and prevent damage to the conductor insulation.

Contact PLP with specific requirements and conductor diameters.

## Plastic Substation Cable Clamp Triple

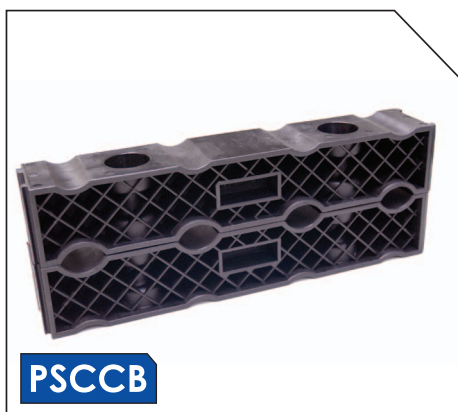


**PSCCT**

Triple type cable clamps fasten a wide range of single and multi conductor low and high voltage cables in triangular formation. Designed to provide superior mechanical strength, ideal for installations where cables are subject to short circuits. The wide contact area provides a controlled pressure on the cable and prevents damage to the conductor insulation.

Contact PLP with specific requirements and conductor diameters.

## Plastic Substation Cable Clamp Blocks



**PSCCB**

Cable Blocks fasten cable diameters from 12 mm up to 32 mm. By means of 2 block parts, 4 cables can be fastened alongside each other. Additional cables are able to be fastened alongside each other by coupling the block parts together using the standard dovetail connection.

Contact PLP with specific requirements and conductor diameters.