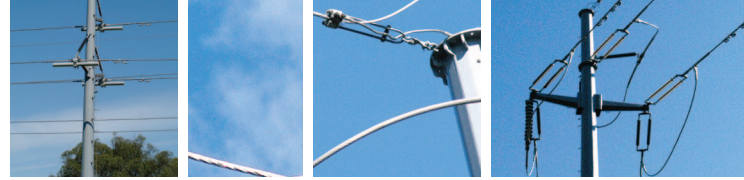


Fiberlign® Deadend



General Recommendations



The Fiberlign Deadend is designed to terminate Optical Ground Wire (OPGW) while minimising any compression stresses that may be transferred to the core or optical elements within. The combination of retaining rods, wedge and housing distribute axial and compressive loading over a large area of the OPGW cable. Left-hand or right-hand lay style is provided to suit left-hand or right-hand lay OPGW respectively.

The slotted housing design allows for the application of the Fiberlign Deadend at any location on the OPGW.

Integral bonding point:

Provisions for electrically bonding the OPGW to the supporting structure or ground lead are an integral part of the housing. An earth bonding lead pre assembled with compression terminals is included in the kit. This assembly can be connected from the Fiberlign Deadend to the ground point in your system.

A second earth bonding lead can be connected for higher fault current requirement. Consult PLP for recommendations.

Sag Adjustment:

The U-bolt provides up to 450 mm of take-up to allow for tension adjustment and extra clearance distance, without the need for additional hardware such as a turnbuckle or extension links.

- Product subject to cable design, constructions and testing.
- Contact PLP with project and cable specification for product recommendation.

For Application Procedures, visit the PLP website.
www.preformed.com.au

