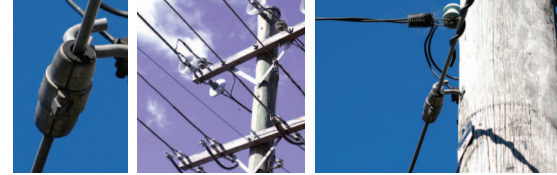


# Fiberlign® Dielectric Suspension/Support

## General Recommendations



The Fiberlign Dielectric Suspension is specifically designed for installation on ADSS cables. Due to the relatively fragile nature of the plastic jackets and non-metallic strength members of ADSS, special features are incorporated into the design of the Fiberlign Dielectric Suspension. Cushion inserts gently grip the ADSS cable and provide moderate slip strength without damaging the cable jacket. Products are available for both suspension and support applications from short spans and tensions to longer spans and higher tension applications. Structural reinforcing rods are also available in single and dual combinations with clamps designed for medium and long spans. Double suspension packages are available upon request for larger than normal turning angles.

- **Short Span Series:** recommended for ADSS spans up to 200m
- **Medium Span Series:** recommended for ADSS spans up to 350m
- **Long Span Series:** recommended for ADSS spans up to 600m