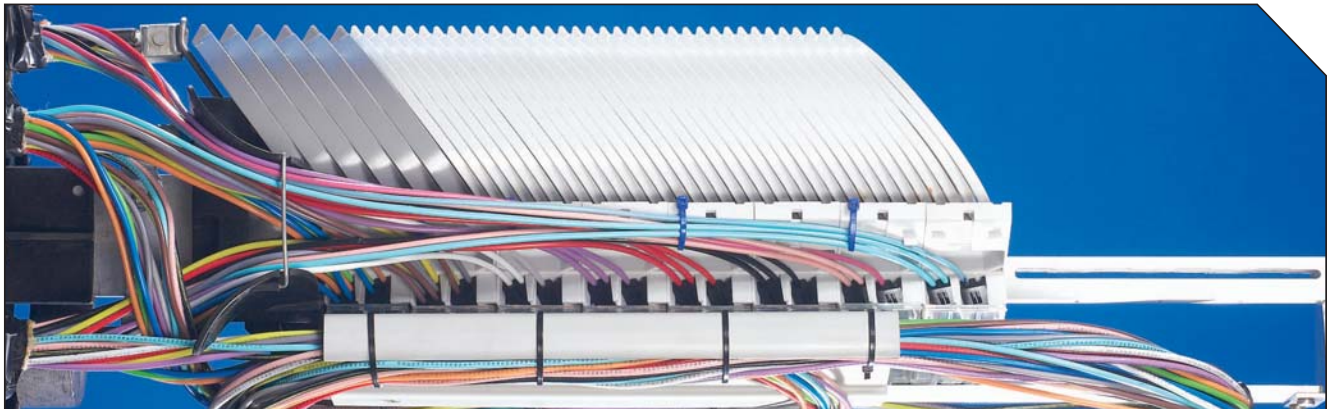


SAFeTNET™ Closure



General Recommendations



SAFeTNET is a new fibre management concept, which allows the operator to have the flexibility to manage their fibre network in many different ways. Whether it is by the fibre network topology or by the subscriber the SAFeTNET fibre management system can adapt expressing fibres either individually (Single Circuit), by the element or even fibres from different tubes!

FibreGuard SAFeTNET Closure base kit consists of:

- Dome Cover
- Base and Buffer Tube Storage
- Express port grommet kit

Key Features:

- Controlled fibre bend management
- Management of uncut fibres in single element, single circuit or distribution module
- No retubing of fibres
- Modules are stackable and interchangeable
- High capacity
- Distribution of fibres from module to module
- Limited components
- Ability to access all fibres of the network
- Suit heatshrink and ANT splice protectors

Available in 2 sizes, 800mm and 400mm

Both Enclosure utilises the same components and can be inter-changed



Fibre Distribution



Fibre Trays Management



Splice Trays



Buffer Tube Storage

Part Number	Splice Unit Capacity	CIRCUIT Unit	Cable Range (mm)	Number of Entries
FGS800-12	12	432 fibres	432 fibres	800
FGS800-06	6	216 fibres	216 fibres	400

SAFeTNET™ Closure



Element Splice Unit



The Element Splice Unit consists of:

- 3 Single Element Trays.
- Splice Capacity: 36 fibres (assuming 12 fibres per tray)

**Part
Number**

FGS-EU-8006842

Circuit Splice Unit



The CIRCUIT Splice Unit consists of:

- 6 Single Circuit Trays.
- Splice Capacity: 12 or 36 fibres (assuming 2 or 6 fibres per tray)

**Part
Number**

FGS-CU-8006841

Distribution Splice Unit



The DISTRIBUTION Splice Unit consists of:

- 1 single Element Tray
- 4 Single Circuit Trays.
- Splice Capacity: 20 or 30 fibres

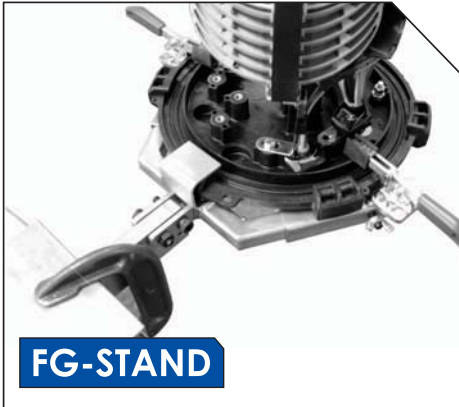
**Part
Number**

FGS-DU-8006843

SAFeTNET™ Closure



FibreGuard Closure Stand



The stand will support the FibreGuard Closure during cable preparation, routing of buffer tubes and splicing. Stand can be tilted to suit your needs.

**Part
Number**

FG-STAND80808030