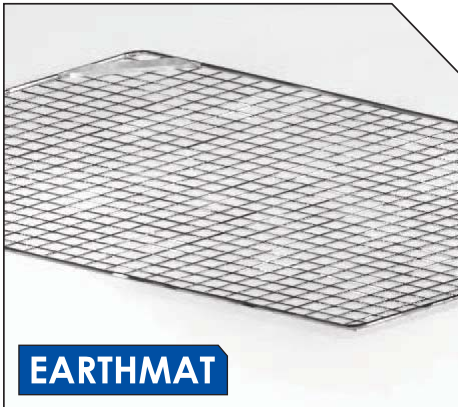


Earthing



Earth Mat



Galvanised Steel Earth Mats can be either permanently installed and attached to the earthing system for where maintenance is required. Various sizes are available as described below.

Part Number	Dimensions L x W (mm)
EARTHMAT-1	2500 x 1200
EARTHMAT-2	2500 x 1000
EARTHMAT-3	1500 x 1000
EARTHMAT-A	2400 x 1200
EARTHMAT-B	1500 x 900
EARTHMAT-C	600 x 450

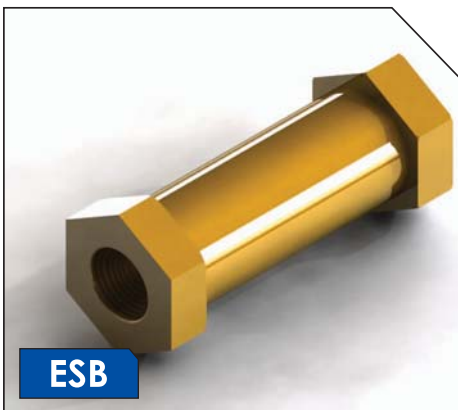
Substations Portable Earth



Substation Portable Earths (SPE) are purpose designed to suit a wide range of applications and installation configurations from 5mm up to 120mm in diameter. SPE devices connect between working earth stirrups on busbars and earth stubs or mats.

All Earthing systems are factory made, tested and certified before dispatch and are individually identified and registered for traceability.

Earth Stub Brass



Earthing stubs are made from high purity brass, able to carry fault currents up to 40kA for 0.5 seconds or equivalent and suitable for connection of earthing devices onto structures.

Part Number	Description
ESB-95213	Earth Stub Brass - M16 Tap