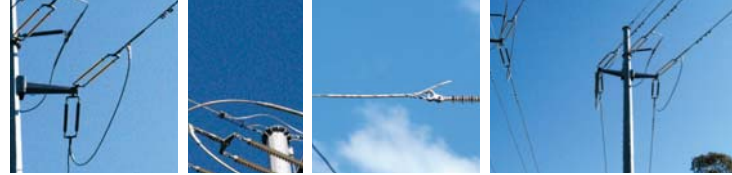


Compression Deadends



General Recommendations



PLP manufacture a range of compression Deadends for aluminium based phase conductors, SC/AC and SC/GZ earth wires. Deadends are available with eye or tongue configurations, in conjunction with in-line or transverse palms to suit any jumper orientation. Contact PLP with specific requirements.

Features

- Engineered to hold 100% conductor UTS
- Designed for standard crimping dies and presses
- Tapered tube design to relieve stress at conductor/deadend meeting point



SAFETY & APPLICATION CONSIDERATION

- Do not modify this product in any way.
- This product is intended for use by qualified linesmen only.
- When working in the area of energised line with this product, extra care should be taken to prevent accidental electrical contact.
- Ensure correct procedures are carried out for conductor preparation; incorrect preparation can cause insufficient electrical bonding and/or compromise mechanical strength.
- Make certain conductor has fully entered the recommended distance into the compression sleeve.
- Choose correct die size marked on the compression sleeve. Caution – incorrect die size may cause failure/damage in service.
- Ensure compression dies are installed correctly into the compression tool.
- Important – Ensure die faces have completely closed upon compression, if not re-check previous considerations.
- Safety equipment including glasses should be worn at all times when operating the compression tool .
- Compression dies are a precision tool and should be maintained and looked after accordingly.

Compression Deadends



For ACSR Conductors - Eye Type



Note:
Confirm stranding when ordering.
Contact PLP for transverse palm.

Part Number	Conductor Stranding	Die Size
CDE-113-1	6/2/3.75	18 A/F
CDE-125	12/7/2.50	28.50 A/F
CDE-143-1	6/4.75+7/1.60	21 A/F
CDE-146	7/4.39+7/1.93	22 A/F
CDE-159	26/2.54+7/1.90	28.50 A/F
CDE-165-1	30/7/0.093	28.50 A/F
CDE-175-1	30/7/2.50	16 A/F
CDE-181-1	30/7/2.59	34.50 A/F
CDE-195-1	30/7/2.79	34.50 A/F
CDE-199-1	26/3.14+7/2.44	34.50 A/F
CDE-210-1	30/7/3.00	34.50 A/F
CDE-219	26/3.45+7/2.68	34 A/F
CDE-224-1	30/7/3.20	34.50 A/F
CDE-235-1	30/7/0.132	40 A/F
CDE-236	26/3.71 7/2.89	40 A/F
CDE-245-1	30/7/3.50	40 A/F
CDE-250	48/3.00+7/2.33	34 A/F
CDE-260-1	30/7/3.71	40 A/F
CDE-270-1	54/7/3.50	44.50 A/F
CDE-271	45/3.38/7/2.25	44.50 A/F
CDE-286-1	54/7/3.18	41 A/F
CDE-293-1	54/7/3.25	44.50 A/F
CDE-300-1	54/7/3.35	44.50 A/F
CDE-308-1	4.50/3.85/7/2.57	44.50 A/F
CDE-315-1	54/7/3.50	47.50 A/F
CDE-318-1	54/7/3.53	47.50 A/F
CDE-324	42/2.72+19/2.59	47.50 A/F
CDE-338-1	54/3.75-19/2.25	47.50 A/F
CDE-362-1	54/4.02+19/2.41	50 A/F

For ACSR Conductors - Tongue Type



Note:
Confirm stranding when ordering.
Contact PLP for transverse palm.

Part Number	Conductor Stranding	Die Size
CDE-113T-1	6/2/3.75	18 A/F
CDE-165T-1-16	30/7/0.093	28.5 A/F
CDE-175T-1	30/7/2.50	28.5 A/F
CDE-181T-1	30/7/2.59	34.50 A/F
CDE-195T-1	30/7/2.79	34.50 A/F
CDE-210T-1	30/7/3.00	34.50 A/F
CDE-224T	30/7/3.20	34.50 A/F
CDE-245T-1	30/7/3.50	40 A/F
CDE-260T-1	30/7/3.71	40 A/F
CDE-270T-1	54/7/3.50	44.5 A/F
CDE-301-T	36/1/4.30	44 A/F
CDE-315T-1	54/7/3.50	48 A/F
CDE-318T-16	54/7/3.53	47.5 A/F

Compression Deadends



For AAAC Conductors - Eye Type



Note: Suits both 1120 and 6201 grade aluminium conductors. Contact PLP for transverse palm.

Part Number	Conductor Stranding	Die Size
CDEAAAC-135-1	7/4.50	21 A/F
CDEAAAC-143	7/4.75	21 A/F
CDEAAAC-163-2	19/3.25	28.5 A/F
CDEAAAC-188-2	19/3.75	30 A/F
CDEAAAC-210-1	37/3.00	34.50 A/F
CDEAAAC-228-1	37/3.25	34.50 A/F
CDEAAAC-238-1	19/4.75	40 A/F
CDEAAAC-245-1	37/3.50	40 A/F
CDEAAAC-263-1	37/3.75	40 A/F
CDEAAAC-270	54/7/3.50	47.50 A/F
CDEAAAC-293	61/3.25	44.50 A/F
CDEAAAC-315-1	61/3.50	48 A/F
CDEAAAC-338-1	61/3.75	47.50 A/F

For AAAC Conductors - Tongue Type



Part Number	Conductor Stranding	Die Size
CDEAAAC-135T	7/4.50	21 A/F
CDEAAAC-143T	7/4.75	21 A/F
CDEAAAC-163T-7	19/3.25	28.50 A/F
CDEAAAC-188T-P2	19/3.75	28.50 A/F
CDEAAAC-210T-1	37/3.00	34.50 A/F
CDEAAAC-238T-NP	19/4.75	40 A/F
CDEAAAC-263-T-1	37/3.75	40 A/F
CDEAAAC-338T-1	61/3.75	47.50 A/F

Note: Suits both 1120 and 6201 grade aluminium conductors. **-NP** denotes no palm. Contact PLP for transverse palm.

For AAC Conductors - Eye Type



Part Number	Conductor Stranding	Die Size
CDEA-143-1	7/4.75	21 A/F
CDEA-163-1	19/3.25	28.50 A/F
CDEA-188-1	19/3.75	34.50 A/F
CDEA-210-1	37/3.00	34.50 A/F
CDEA-235	37/3.35	40 A/F
CDEA-238-1	19/4.75	40 A/F
CDEA-263-1	37/3.35	40 A/F
CDEA-293-1	61/3.75	44.50 A/F
CDEA-338-1	61/3.75	47.50 A/F

Compression Deadends



For AAC Conductors - Tongue Type



CDEA

Part Number	Conductor Stranding	Die Size
CDEA-175T-5-NP	37/2.50	28.05 A/F
CDEA-210T-1	19/4.22	34.50 A/F

Note: -NP denotes no palm.
Contact PLP for transverse palm.

For SC/GZ and SC/AC - Eye Type



CDS

Part Number	Conductor Stranding	Die Size
CDS-083-1	7/2.75	17 A/F
CDS-090	4/3/3.00	17 A/F
CDS-098-1	7/3.25	17 A/F
CDS-105	19/2.00	19 A/F
CDS-113-2	7/3.75	19 A/F
CDS-120-1	7/4.00	19 A/F
CDS-128-2	7/4.25	19 A/F

Note: Made from 304 grade stainless steel incorporating an earth bonding point.

For SC/GZ and SC/SC - Tongue Type



CDST

Part Number	Conductor Stranding	Die Size
CDST-083	7/2.75	17 A/F
CDST-090	3/4/3.00	17 A/F
CDST-098	7/3.25	17 A/F
CDST-113	7/3.75	19 A/F
CDST-128	7/4.25	19 A/F

Note: Made from 304 grade stainless steel incorporating an earth bonding point.