

Conductor Terminals

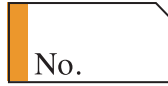


CTA - Aluminium Compression Terminals

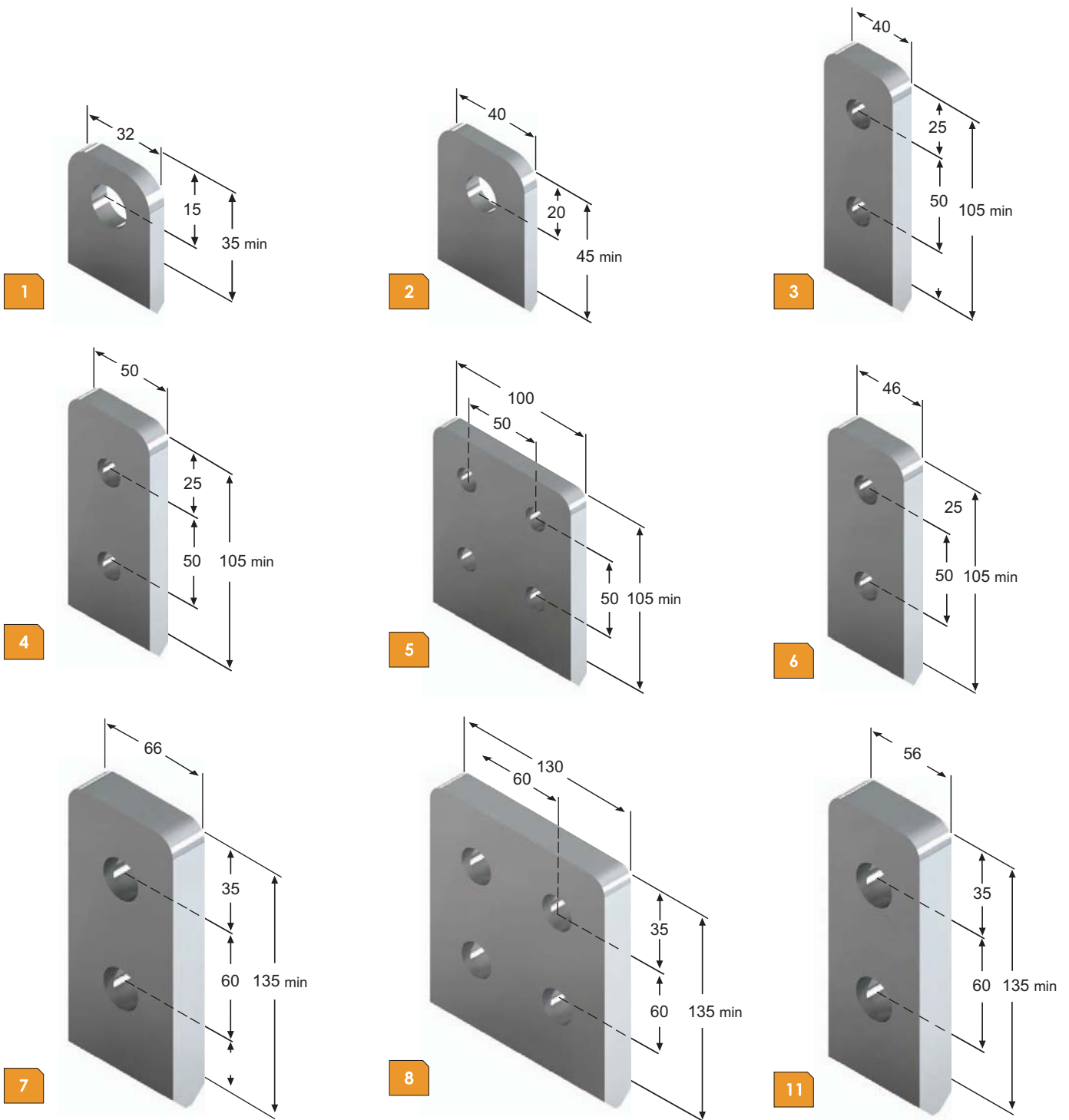
Please fill in the following information for PLP to manufacture compression terminals to suit your requirement. Copy and fax or scan and email your completed catalogue page to us.



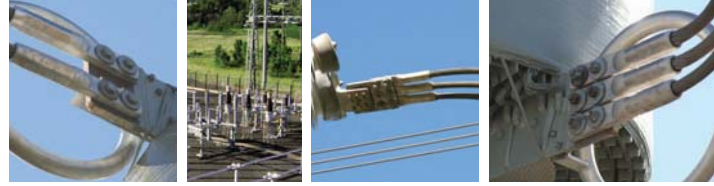
Conductor Stranding:



Palm Type: (Choose from Australian standard palm types AS 2395)

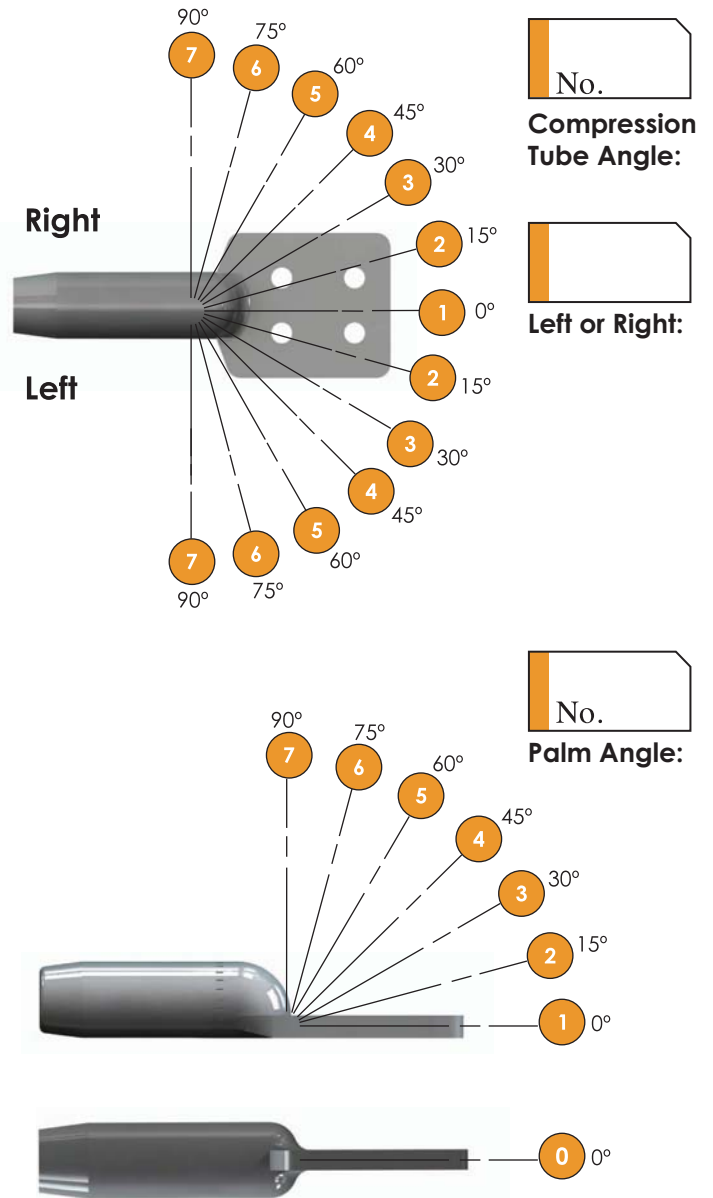
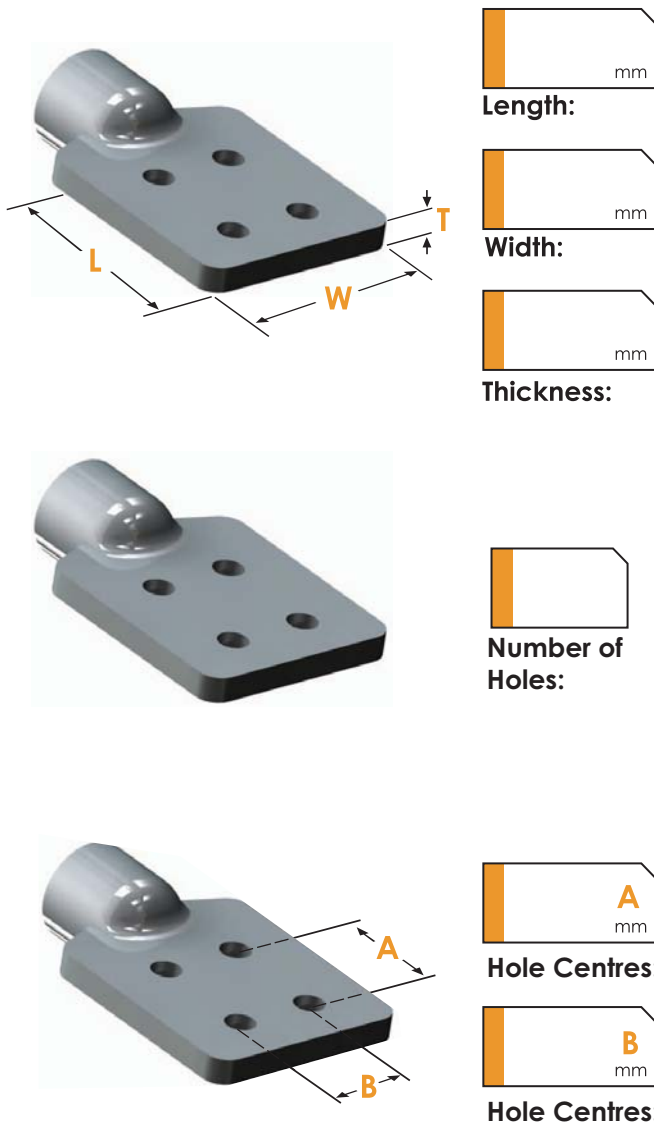


Conductor Terminals



For Non Standard Palm Types - See Below

Palm Dimension (Multiple Hole)



Palm Terminal Characteristics - AS 2395

Terminal Number	Bolt Hole Ø (mm)	Net Contact Area (mm) ²	Min Thickness (Al)	Assigned Current Rating (Al)
1	14	780	6	80
2	14	1,430	6	200
3	14	3,670	12	630
4	14	4,670	12	800
5	14	9,300	12	1,250
6	14	4,270	12	630
7	18 or 22	7,730	20	1,250
8	18 or 22	15,300	20	2,000
9	18 or 22	2,100	20	3,150
10	18 or 22	28,100	20	4,000
11	18 or 22	6,430	20	1,000
12	18 or 22	33,300	20	5,000