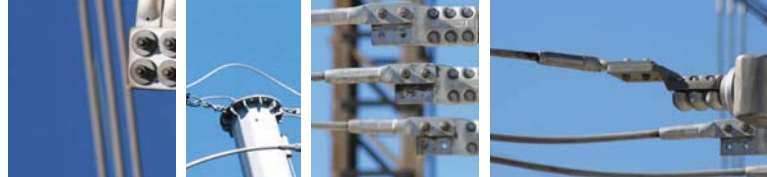


Deadend Jumper Terminal



For ACSR, AAAC & AAC Conductors



CDET

Notes: -P denotes tin plated.

Jumper terminals are manufactured from forged aluminium and have the compression area clearly identified. Compression jumper terminals outlined below are indicative only. Palm angle is normally 30° to match a deadend with an in-line palm. When ordering jumper terminals, please ensure the palm configuration matches the compression deadend palm to which the terminal is to be fitted.

Part Number	Conductor Stranding	Conductor Diameter (mm)	Die Size
CDET-113	6/1/3.75	11.3	18 A/F
CDET-135	7/4.50	13.5	22 A/F
CDET-143-1	6/4.75-7/1.60	14.3	22 A/F
CDET-146	7/4.39/7/1.93	14.6	22 A/F
CDET-163	19/3.25	16.3	28.50 A/F
CDET-175	30/7/2.50	17.5	28.50 A/F
CDET-188	19/3.75	18.8	28.50 A/F
CDET-195	30/7/2.79	19.5	28.50 A/F
CDET-210-1	30/7/3.00 37/3.00	21.0	34.50 A/F
CDET-219	26/3.45+7/2.68	21.9	31.50 A/F
CDET-224	30/7/3.00	22.4	34.50 A/F
CDET-235	30/7/3.35	23.5	40 A/F
CDET-238-2	19/4.75	23.8	40 A/F
CDET-245	30/7/3.50	24.5	40 A/F
CDET-250	48/3.00+7/2.33	25.0	34 A/F
CDET-260	30/7/3.71	26.0	40 A/F
CDET-263	37/3.75	26.3	44.50 A/F
CDET-270-1	54/7/3.00 & 61/3.00	27.0	44.50 A/F
CDET-286	54/7/3.18	28.6	41 A/F
CDET-293	61/3.00 54/7/3.25	29.3	44.50 A/F
CDET-295	54/7/3.28	29.5	40 A/F
CDET-298	37/0.168	29.8	44.50 A/F
CDET-308-1	45/3.85+7/2.57	30.8	44.50 A/F
CDET-315	61/3.50 54/7/3.50	31.5	48 A/F
CDET-318-1	54/7/3.53	31.8	47.50 A/F
CDET-324	42/2.72+19/2.59	32.4	47.50 A/F
CDET-338	61/3.75 54/3.75+19/2.25	33.8	47.50 A/F
CDET-362-1	54/4.02+19/2.41	36.2	50 A/F
CDET-382-2	54/4.25/19/2.55	38.2	54 A/F