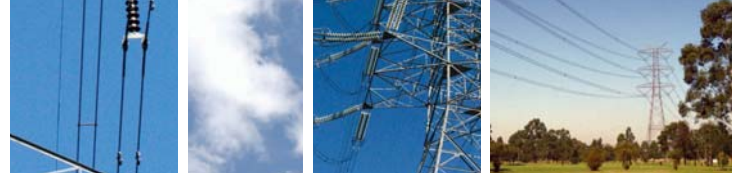
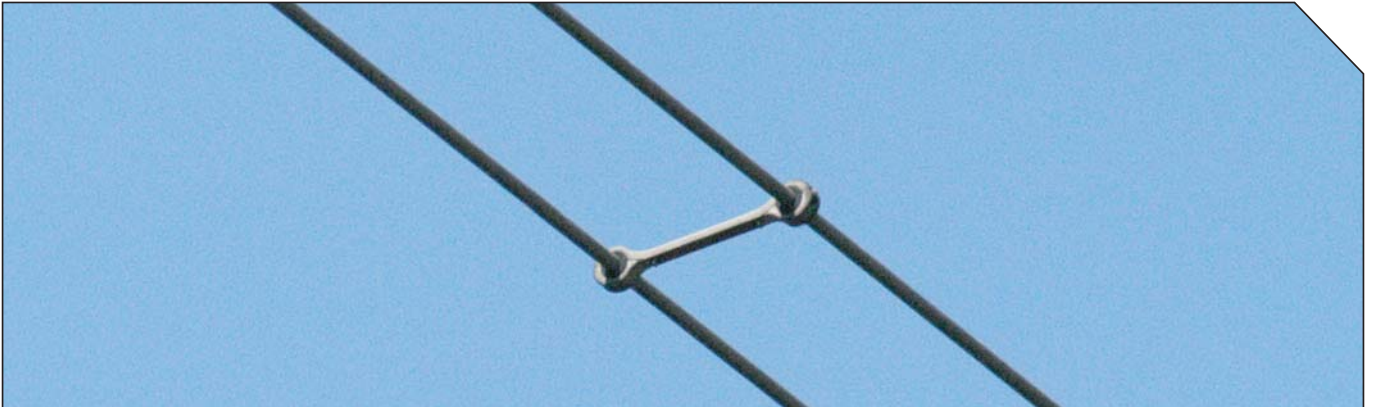


Twin Spacers



General Recommendations



PLP's Twinlok spacer is designed to meet Australian standards combining strength and performance, while still maintaining a lightweight design. The semi-conductive cushion inserts protect the outer stranding of the conductor, whilst the strengthened aluminium frame is designed to protect against conductor clashing without deformation.

A high strength quarter turn fastener is used in the conductor clamping element to insure proper installation. This design provides consistent compression of the inserts and ease of installation, without relying on specific bolt torques or bolts with breakaway heads.

Twin Spacers



Twinlok Spacer



SPT

Part Number	Conductor Diameter (mm)	Conductor Centre Spacing (mm)
SPT-163-230	16.30	230
SPT-210-380	21.00	380
SPT-219-400	21.90	400
SPT-263-520	26.30	520
SPT-270-380	27.00	380
SPT-270-460	27.00	460
SPT-286-200	28.60	200
SPT-286-400	28.60	400
SPT-293-460	29.30	460
SPT-315-380	31.50	380
SPT-315-460	31.50	460
SPT-338-380	33.80	380
SPT-338-460	33.80	460
SPT-338-520	33.80	520
SPT-360-460	36.00	460

Twinlok Spacer Installation Tool



SPT

Part Number
SPT-Tool

Rigid Spacer



SPB

Part Number	Conductor Diameter (mm)	Conductor Centre Spacing (mm)
SPB-188-200-S	18.80	200
SPB-210-380	21.00	380
SPB-219-200	21.90	200
SPB-238-200	23.80	200
SPB-263-200	26.30	200
SPB-270-380	27.00	380
SPB-286-200	28.60	200
SPB-293-200-S	29.30	200
SPB-315-380	31.50	380
SPB-317-200	31.70	200
SPB-338-200	33.80	200
SPB-338-520	33.80	520

DUCTS (THAILAND) LTD.