

Coyote® Splice Case Mounting Hardware



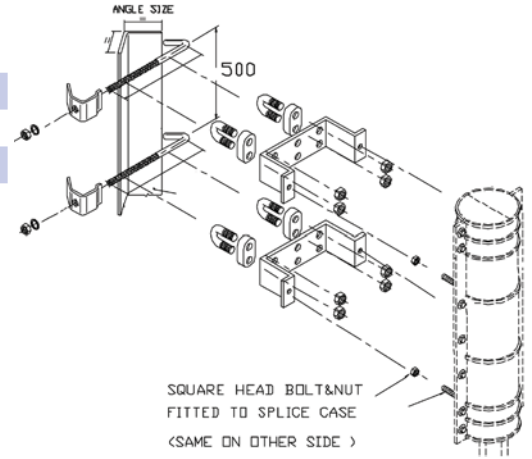
Tower Mounting Bracket



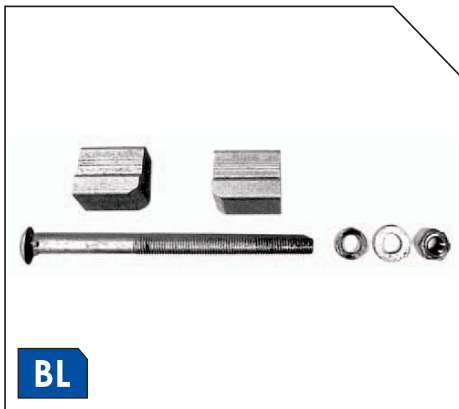
OFSCM

- Suitable for all angle type tower construction
- 1 set includes 2 x brackets to install 1 Coyote® Splice Case

Part Number	Tower Angle Size (mm)
OFSCM-05-01	45 – 100
OFSCM-05-02	110 – 150
OFSCM-05-03	160 – 200
OFSCM-05-04	210 - 250



Band Lock



BL

The PLP Band Strap System uses the unique Band Lock System to attach fittings safely and securely to steel or concrete poles.

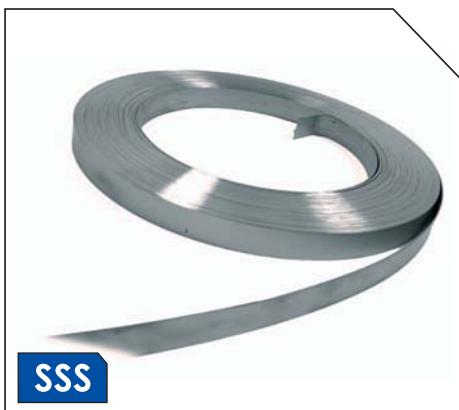
Supplied as one unit, it does not require any special tools.

Quick and easy installation accepts 12, 16 or 19 mm stainless steel strapping.



Part Number
BL-10

Stainless Steel Strap



SSS

Stainless steel strap comes in 30m roll and available in a number of widths.

Part Number	Reel Length (mm)	Strap Width (mm)
SSS-12-H3016	30	12
SSS-16-H3019	30	16
SSS-19-H3022	30	19