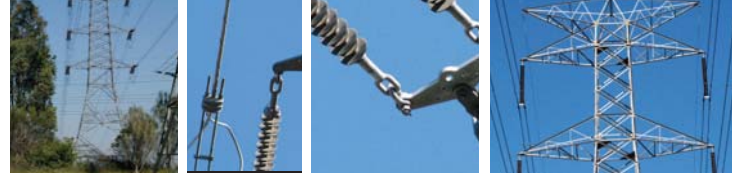


Hardware Fittings



Link (Single Plate)



LSP

Link plates are available in 70, 120 and 160kN. Substitute -070 for -120 or -160 respectively.

Part Number	Rating (kN)	Hole Separation (mm)
LSP-070-100	70	100
LSP-070-150	70	150
LSP-070-200	70	200
LSP-070-250	70	250
LSP-070-300	70	300
LSP-070-350	70	350

Note: Contact PLP if other centre distances are required.

Link (Double Plate)



L

Link plates are available in 70, 120 and 160kN. Substitute -070 for -120 or -160 respectively.

Part Number	Rating (kN)	Hole Separation (mm)
L-070-100	70	100
L-070-150	70	150
L-070-200	70	200
L-070-250	70	250
L-070-300	70	300
L-070-350	70	350

Note: Contact PLP if other centre distances are required.

Sag Link



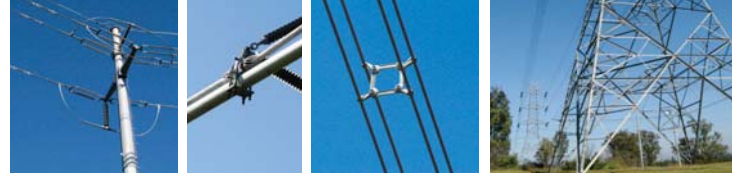
CTSL

For the adjustment of conductors;

- M16 and M20 Hardware.
- CTSLEW is a shorter version for Earthwire.

Part Number	Rating (kN)	Range		Bolt Size
		Minium (mm)	Maximum (mm)	
CTSL-070-1	70	556	974	M16
CTSLEW-070-1	70	320	490	M16
CTSL-120	120	565	870	M16
CTSL-160-1	160	535	735	M20
CTSL-160-4	160	702	1075	M20
CTSL-160-30323	160	236	350	M20
CTSL-160-5S	160	638	974	M20
CTSLEW-160-1	160	320	490	M20
CTSL-210	210	320	490	M20

Hardware Fittings



Yoke Plate - Triangular

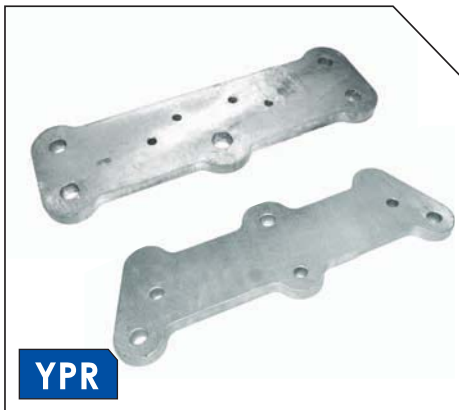


YPT

PLP design and manufacture an extensive range of Yoke plates to suit any application. Triangular and rectangular plates are available with various hole spacing and thickness to suit either tension or suspension applications. Standard ratings available are 70, 120, 160 and 210kN. Please contact PLP with your specific requirements.

Part Number	Tension Rating (kN)	Hole Spacing (mm)	Part Number	Tension Rating (kN)	Hole Spacing (mm)
YPT-070-060	70	60	YPT-160-125	160	125
YPT-070-070	70	70	YPT-160-130-1	160	130
YPT-070-100	70	100	YPT-160-180-4	160	180
YPT-070-125	70	125	YPT-160-200	160	200
YPT-070-150	70	150	YPT-160-250	160	250
YPT-070-200	70	200	YPT-160-380-1	160	380
YPT-070-250	70	250	YPT-160-460-6	160	460
YPT-070-380	70	380	YPT-160-500	160	500
YPT-070-460	70	460	YPT-160-520-6	160	520
YPT-070-560	70	560	YPT-160-560-1	160	560
YPT-070-660	70	660	YPT-160-60	160	60
YPT-120-060	120	60	YPT-160-660	160	660
YPT-120-100	120	100	YPT-190-380-6	190	380
YPT-120-200	120	200	YPT-190-460-6	190	400
YPT-120-380	120	380	YPT-210-380	210	200
YPT-120-400	120	400	YPT-210-400	210	400
			YPT-320-380-1	320	380

Yoke Plate - Rectangular



YPR

Note: Please contact PLP with your specific requirements.

Part Number

YPR-***

Maintenance Tension Link



MTL

Galvanised Steel

Part Number	Tension Rating kN	Hole Centre Spacing (mm)
MTL-160-4	160	60



PREFORMED LINE PRODUCTS
(THAILAND) LTD.

Hardware Fittings



Ball 'Y' Clevis



BYC

Part Number	Minimum Failing Load (kN)	Ball Size (mm)	Bolt Size (mm)
BYC-120-AH	120	16	M16
BYC-070-1	70	16	M16
BYC-070-8	70	16	M16
BYC-120-8	120	16	M16
BYC-160-8	160	20	M20

Note: -AH refers to ball Y clevis for arcing horn

Ball Eye for Arcing Horn



BEAH

Part Number	Minimum Failing Load (kN)	Ball Size (mm)
BEAH-070-9	70	16
BEAH-160-1	160	20
BEAH-210-1	210	20

Ball Clevis for Arcing Horn



BCAH

Part Number	Minimum Failing Load (kN)	Ball Size (mm)	Bolt Size (mm)
BCAH-070-1	70	16	M16

Hardware Fittings



Twisted Socket Tongue for Arcing Horn



TSTA

Part Number	Minimum Failing Load (kN)	Socket Size (mm)	Security Clip Type
TSTA-120-1	120	16	16 r-clip

Twisted Socket Tongue



TST

Part Number	Rating (kN)	Ball Size (mm)
TST-070-1	70	16
TST-120-1	120	16
TST-160-1	160	20
TST-210-1	210	20

Arcing Horn



AH

Arcing horns are a cost effective device for protecting valuable line equipment by allowing short circuit currents to pass across an air gap. Please advise PLP of line specifics at time of order for a recommendation on suitable products.

Part Number

AH***



PREFORMED LINE PRODUCTS
(THAILAND) LTD.

Hardware Fittings



Shackles - Galvanised Forged Steel



S

Part Number (Shackle)	Tension Rating (kN)	Bolt Size (mm)	Standard Pack Quantity
S-070-1	70	M16	25
S-120-1	120	M16	25
S-160-1	160	M20	15
S-210-1	210	M20	15

Part Number (Twisted)	Tension Rating (kN)	Bolt Size (mm)
TS-070-1	70	M16

D - Shackles



DS

D - Shackles are used to suspend PLP aluminium sheaves in conjunction with twin grips or tygards.

Part Number

DS-070-8

Aluminium Sheave - 54mm



AS

Bolt holes to suit M16 and M20 bolts.

Part Number	Bore Diameter (mm)	Standard Pack Quantity	Colour Code
AS-54-17	17	25	Red
AS-54-22	22	25	Green

Hardware Fittings



Sheave - Machined Steel



THGR

Part Number	Hole Size (mm)	Sheave Diameter (mm)
THGR-57	21	57
THGR-75	26	75
THGR-146A-C	50	146
THGR-146B-C	26	146
THGR-150	32	150
THGR-150-25	25	150
THGR-150-36	38	150

Clevis Thimble - Galvanised Cast Iron



CTH

- MFL 70kN
- Used for small GZ or copper grips

Par Number	Maximum Grip Size	Thimble Bend Radius (mm)	Standard Pack Quantity
CTH-070-MCI	GFG-083 CFG-100-CL	20	25

Clevis Thimble - Galvanised Cast Iron



GCT

- MFL 120 kN
- Used for medium to large GZ and copper grips

Part Number	Maximum Grip Size	Thimble Bend Radius (mm)	Standard Pack Quantity
GCT-120-TC5F	GFG-163 CFG-260-LT-CL	28.5	25



PREFORMED LINE PRODUCTS
(THAILAND) LTD.

Hardware Fittings



Socket Clevis - Galvanised Cast Iron



Available with 'W' or 'R' clip security pin.
120kN available in cast steel option. Contact PLP for information.

Part Number	Tension Rating (kN)	Socket Size (mm)	Bolt Size (mm)	Standard Pack Quantity
SC-070-1	70	16	M16	25
SC-120-1	120	16	M16	-
SC-160-1	160	20	M20	-
SC-210-1	210	20	M20	8

Socket Thimble - Galvanised Cast Iron



'W' clip security pin

Part Number	Tension Rating (kN)	Thimble Bend Radius (mm)	Standard Pack Quantity
STH-070-1	70	20	25

Socket Tongue - Galvanised Forged Steel



Available with 'W' or 'R' clip security pin

Part Number	Tension Rating (kN)	Bolt Size (mm)	Standard Pack Quantity
ST-070-1	70	M16	25
ST-160-1	160	M20	-
ST-210-1	210	M20	-

Hardware Fittings



Socket Ball - Galvanised Forged Steel



SB

Part Number	Rating (kN)	Socket Size (mm)	Ball Size (mm)
SB-070-1	70	16	16
SB-120-3	120	16	16
SB-160-4	160	20	20
SB-160/070-4	70	20	16

Tongue Clevis - Galvanised Cast Iron



TC

Part Number	Tension Rating (kN)	Bolt Size (mm)	Standard Pack Quantity
TC-070-1	70	M16	25
TC-120-1	120	M16	25

Ball Clevis - Galvanised Forged Steel



BC

Part Number	Tension Rating (kN)	Bolt Size (mm)	Ball Size (mm)	Standard Pack Quantity
BC-070-1	70	M16	16	25
BC-120-1	120	M16	16	25
BC-160-3	160	M20	20	15
BC-210-1	210	M20	20	-

Hardware Fittings



Y Clevis Tongue - Galvanised Forged Steel



CTY

Part Number	Tension Rating (kN)	Bolt Size (mm)	Hole Size (mm)	Standard Pack Quantity
CTY-070-1	70	M16	18	25
CTY-160-120-2	120	M20	22	-

Link Eye - Galvanised Forged Steel



LE

Part Number	Tension Rating (kN)	Standard Pack Quantity
LE-070-1	70	50
LE-120	120	-
LE-160-1	160	-
LE-210-1	210	-
LE-320	320	-

Eye Tongue - Galvanised Forged Steel



ET

Part Number	Tension Rating (kN)	Bolt Size (mm)	Standard Pack Quantity
ET-070-1	70	M16	25
ET-070-22	70	M20	25
ET-120-1	120	M16	-
ET-160-1	160	M20	-

Hardware Fittings



Twisted Eye Tongue - Galvanised Forged Steel



TET

Part Number	Tension Rating (kN)	Bolt Size (mm)	Standard Pack Quantity
TET-070	70	M16	25
TET-120-1	120	M16	-
TET-160-1	160	M20	15

Ball Eyes - Galvanised Forged Steel



BE

Part Number	Tension Rating (kN)	Ball Size (mm)	Standard Pack Quantity
BE-070-1	70	16	25
BE-120-1	120	16	-
BE-160-1	160	20	15
BE-210-8	210	20	-

Ball Hook Long Shank - Galvanised Forged Steel



BHL

Part Number	Tension Rating (kN)	Standard Pack Quantity
BHL-070-1	70	25

Note: Safety latch available. Substitute -1 for -2.

Hardware Fittings



Ball Hook Short Shank - Galvanised Forged Steel



Part Number	Tension Rating (kN)	Standard Pack Quantity
BHS-070-1	70	25

Tongue Hook - Galvanised Forged Steel



Part Number	Tension Rating (kN)	Standard Pack Quantity
TH-070-1	70	25

Tongue Hook/Latched - Galvanised Forged Steel



Part Number	Tension Rating (kN)	Standard Pack Quantity
THL-070-1	70	25

Hardware Fittings



Ball Tongue



BT

Par Number	Tension Rating (kN)	Ball Size (mm)	Hole Size-Tongue (mm)
BT-070-5	70	16	18
BT-160-8	160	20	21.5
BT-210-1	210	20	22

Counterweight Assembly



CW

Counterweight assemblies are custom designed for installation on transmission line suspension points. Typical designs are shown below as an illustration of the design and manufacturing capabilities of PLP. Please contact PLP with line specifics at time of order for a recommendation on suitable products.

Part Number

CW***

Guy Crossover Plate



GCP

- For 20mm and 22mm strand.
- For locking together Tower Guy Wires where they cross each other.

Part Number	Hole Size (mm)
GCP-020-8	20
GCP-022C	22

Hardware Fittings



Extension Link Eye Eye Galvanised Forged Steel



Part Number	Rating (kN)	Length (mm)
ELEE-160-450	160	450
ELEE-160-1170-3	16	1170
ELEE-160-1220-3	16	1220

Extension Link Ball Eye Galvanised Forged Steel



Part Number	Rating (kN)	Length (mm)	Ball Size (mm)
ELBE-160-250-1	160	250	20
ELBE-160-350-1	160	350	20
ELBE-160-500-1	160	500	20
ELBE-160-620-1	160	620	20
ELBE-160-800-1	160	800	20
ELBE-160-1000	160	1000	20
ELBE-160-1100-1	160	1100	20
ELBE-160-1330	160	1330	20
ELBE-160-1620	160	1620	20
ELBE-160-2000	160	2000	20

Extension Link Ball Clevis Galvanised Forged Steel



Part Number	Rating (kN)	Length (mm)	Ball Size (mm)	Bolt Size
ELBC160-1	160	250	20	M20

Hardware Fittings

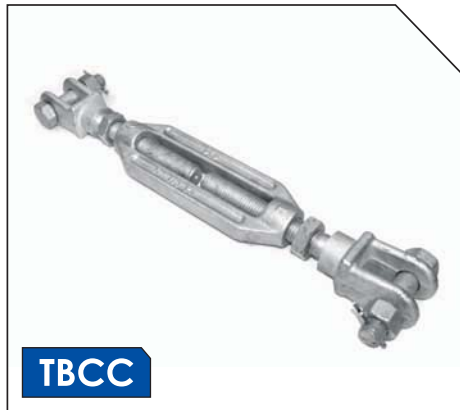


Extension Link Socket Clevis Galvanised Steel



Part Number	Rating (kN)	Length (mm)	Socket Size (mm)	Bolt Size	Material
ELSC-160-2	160	310	20	M20	Cast Steel
ELSC-160-4	160	310	20	M20	Forged Steel

Turnbuckles - Clevis/Clevis



Galvanised Forged Steel

Part Number	Rating kN	Bolt Size (mm)	Range (mm)	
			Minimum	Maximum
TBCC-070-1	70	M16	350	480
TBCC-160-1	160	M20	480	600

Turnbuckles - Clevis/Tongue



Galvanised Forged Steel

Part Number	Rating kN	Bolt Size (mm)	Range (mm)	
			Minimum	Maximum
TBCT-070-1	70	M16	350	480
TBCT-160-1	160	M20	480	600

Hardware Fittings



Turnbuckles - Eye/Clevis



TBEC

Galvanised Forged Steel

Part Number	Rating kN	Bolt Size (mm)	Range (mm)	
			Minimum	Maximum
TBEC-070-1	70	M16	350	480
TBEC-160-1	160	M20	480	600

Turnbuckles - Eye/Eye



TBEE

Galvanised Forged Steel

Part Number	Rating kN	Range (mm)	
		Minimum	Maximum
TBEE-070-1	70	350	480
TBEE-160-1	160	480	600

U-Bolt Stay Tensioner



GADJ

Made from galvanised steel for use on staywires and anchors. Used when loads exceed 140 kN.

Part Number	Tension Rating (kN)	Suites Anchor Rod Ø (mm)	Length Total (mm)	Thread Length (mm)	U-Bolt Ø (mm)
GADJ-144-350	144	M24	320	240	M20
GADJ-308-530	308	M30	530	250	M30
GADJ-320-530	320	M36	530	250	M30

Hardware Fittings



M16 Galvanised Pole Step - For Concrete Poles



Part Number	Bolt Size (mm)	Length (mm)	Standard Pack Quantity
GPSC-16180	M16	180	25

M20 and M24 Elongated Eye Bolt



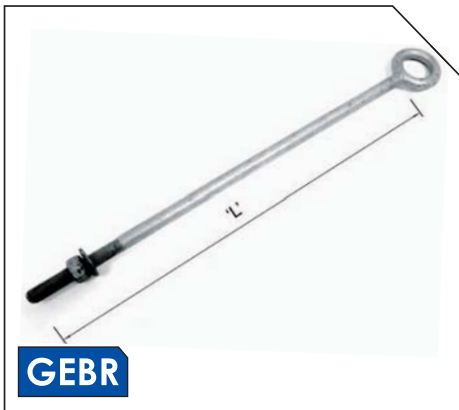
- This fitting used with the PLP Anchor
- Other lengths available on request

Part Number (M20)	Part Number (M24)	Length (mm)	Threaded Length (mm)
GEBE-20150	GEBE-24150	150	150
GEBE-20200	GEBE-24200	200	150
GEBE-20250	GEBE-24250	250	150
GEBE-20300	GEBE-24300	300	150
GEBE-20350	GEBE-24350	350	150
GEBE-20400	GEBE-24400	400	150
GEBE-20420	GEBE-24420	420	150
GEBE-20450	GEBE-24450	450	150
GEBE-20500	GEBE-24500	500	150
GEBE-20550	GEBE-24550	550	150
GEBE-20600	GEBE-24600	600	150
GEBE-20650	GEBE-24650	650	150
GEBE-20700	GEBE-24700	700	150
GEBE-20750	GEBE-24750	750	150
GEBE-20800	GEBE-24800	800	150
GEBE-202500	GEBE-242500	2500	150

Hardware Fittings



M16 and M20 Round Eye Bolt



Note: Other lengths available on request.

Made of galvanised steel for use with either wood or concrete poles.

Part Number	Length (mm)	Threaded Length (mm)	Part Number	Length (mm)	Threaded Length (mm)
GEBR-16150	150	100	GEBR-20190	190	150
GEBR-16200	200	100	GEBR-20200	200	150
GEBR-16250	250	100	GEBR-20250	250	150
GEBR-16300	300	100	GEBR-20300	300	150
GEBR-16350	350	100	GEBR-20350	350	150
GEBR-16400	400	100	GEBR-20400	400	150
GEBR-16450	450	100	GEBR-20450	450	150
GEBR-16500	500	100	GEBR-20500	500	150
			GEBR-20600	600	150

M20 Round Eye Bolt - Special Assembly



Made of galvanised steel for use with either wood or concrete poles.

Part Number	Length (mm)	Threaded Length (mm)
GEBR-20400-SQW	400	100
GEBR-20425-SQW	425	100
GEBR-20450-SQW	450	100
GEBR-20475-SQW	475	100
GEBR-20500-SQW	500	100
GEBR-20525-SQW	525	150
GEBR-20550-SQW	550	150
GEBR-20575-SQW	575	150
GEBR-20600-SQW	600	150
GEBR-20650-SQW	650	150