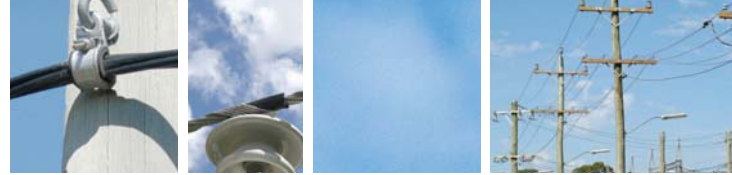


Suspension Clamp AS Series



For Aerial-Bundled Conductors (ABC)



The AS series of LV ABC Suspension Clamps are intended for use on straight runs and for line deviation angles up to 25°.

These suspension clamps are suitable for coastal environments and are manufactured from high strength corrosion-resistant aluminium alloy, incorporating neoprene bushes and stainless steel hardware. An optional failure link is built into the fitting.

The clamps are designed as a one-piece format, eliminating the problems of dropping components whilst installing the clamp. The AS suspension clamp greatly assists linesmen by supporting the cable in the open position, and allowing fast installation by simply closing the clamp and tightening the fastener.

Features

- Corrosion resistant cast aluminium body
- Suitable for coastal and highly polluted environment
- Neoprene bushes
- Stainless steel hardware
- Fast and simple installation
- Optional failure link feature
- Tested to Australian Standard 3766

Part Number	Conductor Construction (mm ²)	Standard Pack Quantity
BCSC-2050-2S	2 x 50	63
BCSC-2050-2SWL	2 x 50	63
BCSC-2050-2SHD	2 x 50	64
BCSC-2095-2S	2 x 95	63
BCSC-2095-2SWL	2 x 95	63
BCSC-2095-2SHD	2 x 95	64
BCSC-4050-2S	4 x 50	64
BCSC-4050-2SWL	4 x 50	64
BCSC-4050-2SHD	4 x 50	64
BCSC-4095-2S	4 x 95	64
BCSC-4095-2SWL	4 x 95	64
BCSC-4095-2SHD	4 x 95	64

Note: WL = Weak Link (5kN)
HD = Heavy Duty (stainless wear ring)

Suspension Clamp ASV Series



For Aerial-Bundled Cable (ABC)



The ASV series of LV ABC Suspension clamps have been developed to protect the integrity of the cable insulation by controlling the cable slip during impact loads. The built-in failure link allows the undamaged cable to drop to the ground, thus providing a coordinated failure mechanism. The clamps are intended for use on straight runs and line deviation angles up to 25°.

The installation features of the clamps have been designed following extensive field trials carried out in conjunction with the major electricity distribution authorities.

The ASV series Suspension Clamps are suited for coastal environments and are manufactured from high strength corrosion-resistant aluminium alloy and incorporate neoprene bushes and stainless steel hardware. A failure link is built into the clamp.

The clamps are designed as a one-piece format, eliminating the common problem of dropping components whilst installing the clamp. The ASV series Suspension Clamp greatly assist linesmen by supporting the cable in the open position and allowing fast installation by simply closing the clamp and tightening the fastener.

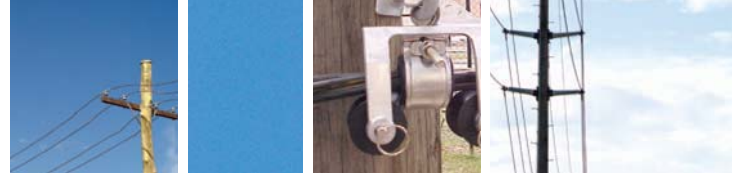
Features

- Corrosion - resistant cast aluminium alloy body
- Neoprene bushes
- Stainless steel hardware
- Fast and simple installation
- Built-in failure link for greater system protection
- Eliminate cable damage during major impacts on the line
- The PLP AS series Suspension clamp complies with Australian Standard 3766

Part Number	Conductor Construction (mm ²)	Standard Pack Quantity	Weak Link Faling Load (kN)
BCSC-4095-3S	4 x 95	64	6
BCSC-4095-3SHD	4 x 95	30	N/A
BCSC-4150-3S	4 x 150	30	8
BCSC-4150-3SHD	4 x 150	30	N/A

Note: HD = Heavy Duty (stainless wear ring)

ABC Roller Suspension Clamp



Roller Assembly



BCSCRA

This Suspension Clamp is a light weight device to support/suspend aerial-bundled cable from pole hooks without damage. With the assistance of an integrated and reusable cable-stringing roller, the system makes for easier installation of conductors.

It is normally supplied with a weak link to allow the eye to break away from the body if the load exceeds 6.5kN.

Benefits

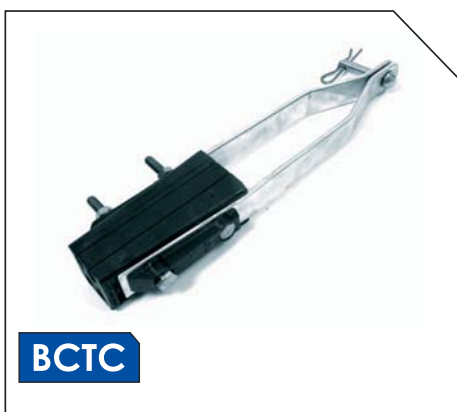
- Rounded eye edges
- Hinged jaw for ease of installation
- Stainless hinge pin
- Extra long retaining screw enabling seat and nut to remain captive during installation

Part Number	Conductor Construction (mm ²)	Standard Pack Quantity
BCSCRA-2095-WL	2 x 95 and 4 x 50	10
BCSCRA-2095	2 x 95 and 4 x 50	10
BCSCRA-4095-WL	4 x 95	10
BCSCRA-4095	4 x 95	10
BCSCRA-4150	4 x 150	10
BCSCRA-4150WL	4 x 150	10
BCSRA-Roller	Roller bracket to support Clamp	

Note:WL = Weak Link (6.5kN)

Strain Clamp AS Series

AS Series Strain Clamp



BCTC

The Preformed AS Series Strain Clamps are intended for use on low voltage aerial-bundled conductors (LV ABC) for in-line or angle termination and tested to AS3766. The Preformed AS Strain Clamp is light and easy to handle.

The standard clamps are supplied with stainless steel clamp bolts and a galvanised steel clevis pin. A stainless steel clevis pin can also be supplied for special applications.

Features

- Glass reinforced nylon clamping wedges, UV stabilised
- Aluminium alloy straps
- Incorporates a large window for easy cable exit
- Standard with stainless steel fasteners
- R clip for fast installation
- Also available with stainless steel clevis pin (part no. BCTC-4150-3S).

Part Number	Conductor Construction (mm ²)	Clamp Hardware Material	Standard Pack Qty
BCTC-4050-2	4 x 50	Galvanised	15
BCTC-4150-3G	4 x (95 -150)	Galvanised	15
BCTC-4150-3S	4 x (95 -150)	Stainless Steel	15