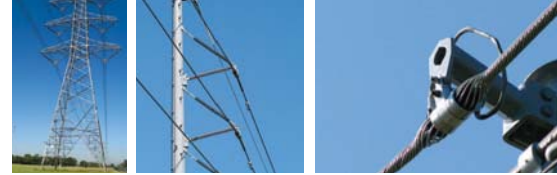


Fiberlign® Cushion Clamp



General Recommendations



The Fiberlign® Cushion Clamp provides excellent protection to OPGW at support points. The combination of the Structural Reinforcing Rods and the elastomer inserts at the ends of the clamp body halves reduces bending stresses on the OPGW during aeolian vibration or galloping activity. The Cushion Clamp is designed to suit LV or HV power systems with spans up to 250m. For spans greater than 250m, Fiberlign® Suspension or support are recommended.

Lay Direction:

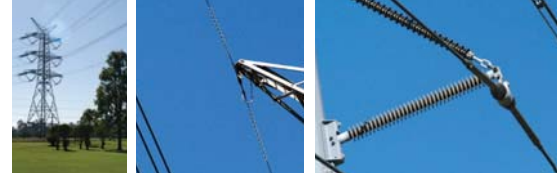
The Cushion Clamp can accommodate either left-hand lay or right-hand lay OPGW.

Line Angles:

The maximum recommended line angle for a single Fiberlign® Cushion Clamp is 30°. For line angles up to 60°, the Double suspension cushion clamp is recommended.

- Product subject to cable design, constructions and testing.
- Contact PLP with project and cable specification for product recommendation.

Fiberlign® Cushion Clamp



Fiberlign® Cushion Clamp Suspension



OPGWCCS

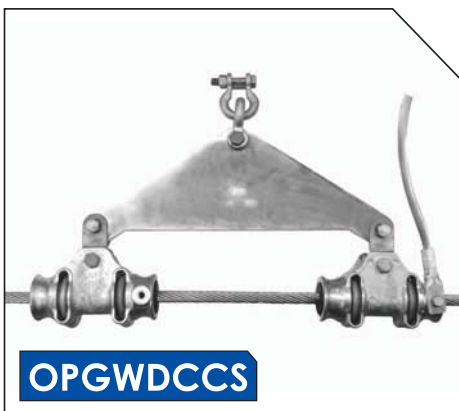
Note: -2E detentes 2x earth bonding leads

OPGWCCS - Assembly contents

- Cushion Clamp
- 70kN shackle
- Earth Bonding Lead

Assembly Part Number	Cable Diameter Range (mm)
OPGWCCS-090098	9.00 - 9.80
OPGWCCS-099109	9.90 - 10.90
OPGWCCS-110116	11.00 - 11.6
OPGWCCS-117122	11.70 - 12.20
OPGWCCS-123128	12.30 - 12.80
OPGWCCS-129136	12.90 - 13.60
OPGWCCS-137143	13.70 - 14.30
OPGWCCS-144148	14.40 - 14.80
OPGWCCS-149156	14.90 - 15.60
OPGWCCS-157163	15.70 - 16.30
OPGWCCS-164168	16.40 - 16.80
OPGWCCS-177183	17.70 - 18.30
OPGWCCS-184188	18.40 - 18.80
OPGWCCS-189196	18.90 - 19.60
OPGWCCS-197202-2E	19.61 - 20.20
OPGWCCS-209217-2E	20.90 - 21.70
OPGWCCS-232239-2E	23.20 - 23.90
OPGWCCS-256263-2E	25.60 - 26.30

Fiberlign® Double Cushion Clamp Suspension



OPGWDCCS

OPGWDCCS - Assembly contents

- Cushion Clamp x2
- 70kN shackle x2
- Clevis Tongue x2
- Triangular Yoke Plate
- Earth Bonding Lead

Assembly Part Number	Cable Diameter Range (mm)
OPGWDCCS-090098	9.00 - 9.80
OPGWDCCS-099109	9.90 - 10.90
OPGWDCCS-110116	11.00 - 11.6
OPGWDCCS-117122	11.70 - 12.20
OPGWDCCS-123128	12.30 - 12.80
OPGWDCCS-129136	12.90 - 13.60
OPGWDCCS-137143	13.70 - 14.30
OPGWDCCS-144148	14.40 - 14.80
OPGWDCCS-149156	14.90 - 15.60
OPGWDCCS-157163	15.70 - 16.30
OPGWDCCS-164168	16.40 - 16.80
OPGWDCCS-177183	17.70 - 18.30
OPGWDCCS-184188	18.40 - 18.80
OPGWDCCS-189196	18.90 - 19.60
OPGWDCCS-197202-2E	19.61 - 20.20
OPGWDCCS-209217-2E	20.90 - 21.70
OPGWDCCS-232239-2E	23.20 - 23.90
OPGWDCCS-256263-2E	25.60 - 26.30



PREFORMED LINE PRODUCTS
(THAILAND) LTD.