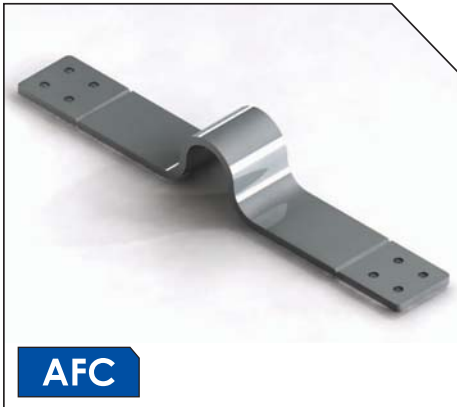


Aluminium Flexible Connectors



Aluminium Flexible Connector



TYPE 'A'

Type 'A' flexible connectors are designed for mounting on the side of Busbars where they may be used with double roller or roller/fixed supports. Common palms are No. 5 and 8.

Note: maximum ratings are shown for various palms. Other palms can be requested for custom applications; however fittings may be de-rated to suit.

Current ratings (A)	Laminations	Lamination Width	Palm Number
1200	10 x 1.2mm	100	AS5
1250	13 x 1.2mm	100	AS5
2000	13 x 1.2mm	130	AS8
2500	16 x 1.2mm	130	AS8

- Nominate palm type e.g. (AS5, AS8, etc...)
- Nominate separation length and height
- Offset palms available



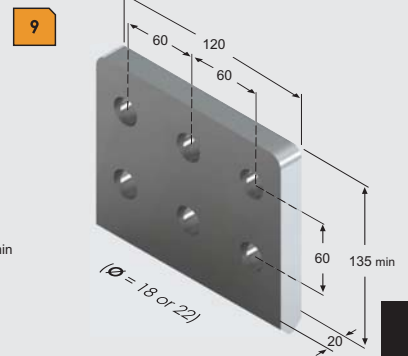
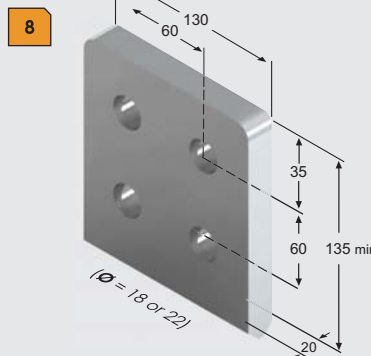
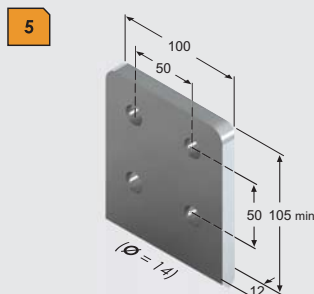
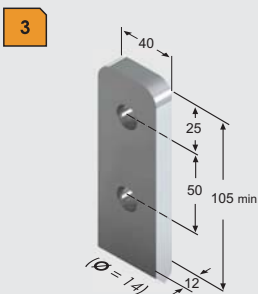
TYPE 'B'

Type 'B' flexible connectors are designed for mounting on the top of Busbars where they may be used with double roller or roller/fixed supports. Common palms used are No. 5 and 8.

Note: maximum ratings are shown for various palms. Other palms can be requested for custom applications; however fittings may be de-rated to suit.

Current rating (A)	Laminations	Lamination Width	Palm Number
1200	10 x 1.2mm	100	AS5
1250	13 x 1.2mm	100	AS5
2000	13 x 1.2mm	130	AS8

- Nominate palm type e.g. (AS5, AS8, etc...)
- Nominate separation length



Aluminium Flexible Connectors



TYPE 'C'

Type 'C' is another style of flexible connector incorporating conductor rather than laminations and may also be used with double roller or roller/fixed supports or attachment on to disconnectors.

Note: maximum ratings are shown for various palms. Other palms can be requested for custom applications; however fittings may be de-rated to suit.

Current rating (A)	Stranding	Palm Type	Hole Ø (mm)	Palm Thickness (mm)
1800	3 x 37/3.00	4 Hole 60 x 70	18	16
2500	4 x 37/3.00	4 Hole 60 x 70	18	16

- Nominate palm type e.g. (AS5, AS8, etc...)
- Nominate separation length and height



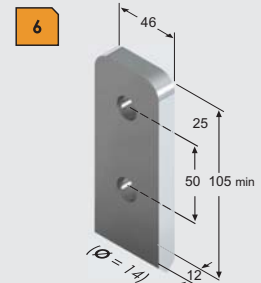
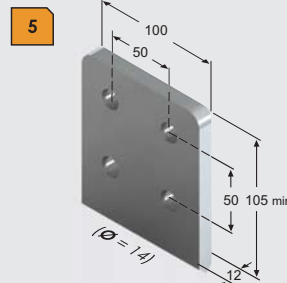
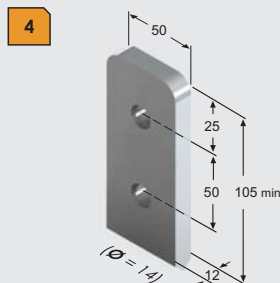
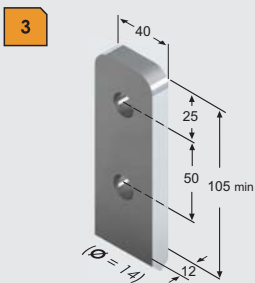
TYPE 'D'

Type 'D' flexible connectors are similar to type 'B' but incorporating conductor rather than laminations and are designed for mounting to an end or a side palm where they may be used with double roller or roller/fixed supports. Commonly used palms are No. 5 and 7.

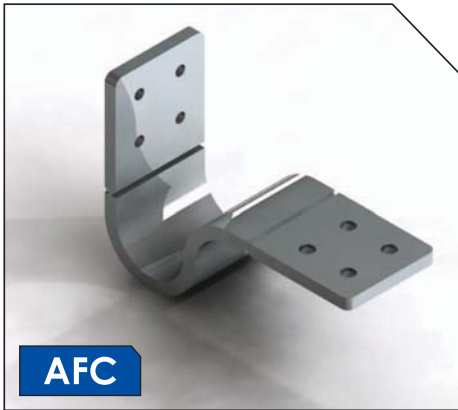
Note: maximum ratings are shown for various palms. Other palms can be requested for custom applications; however fittings may be de-rated to suit.

Current rating (A)	Stranding
600	1 x 37/3.75
1000	1 x 61/3.75

- Nominate palm type e.g. (AS6, AS7, etc...)
- Nominate separation length and height



Aluminium Flexible Connectors



AFC

TYPE 'E'

Type 'E' flexible connectors are used at disconnector positions and in conjunction with fixed or roller supports. They are designed to be mounted under the disconnector palm. Centre of busbar to upper palm surface dimension should be 130mm + thickness of disconnector palm.

Note: maximum ratings are shown for various palms. Other palms can be requested for custom applications; however fittings may be de-rated to suit.

Current Rating (A)	Laminations (mm)	Lamination Width (mm)	Palm Number	Palm Thickness (mm)
1500	14 x 1.2mm	100	AS5	16
1650	16 x 1.2mm	100	AS5	20
2000	13 x 1.2mm	130	AS8	16
2500	16 x 1.2mm	130	AS8	20
2500	16 x 1.2mm	130	AS9	20
3150	17 x 1.2mm	200	AS9	20

- Nominate palm type e.g. (AS5, AS8, etc...)
- Nominate separation length and height

Busbar Joint Sleeves

Busbar Joint Sleeves



BBS

Part Number	Busbar Outer Ø (mm)	Busbar Inner Ø (mm)	Length (mm)
BBJS-100-80	100	80	300
BBJS-100-88	100	88	300
BBJS-100-92	100	92	300
BBJS-100-94	100	94	300
BBJS-125-105	125	105	300
BBJS-125-113	125	113	300

PART NUMBER SYSTEM

BBJS	Busbar Joint Sleeve
100	Busbar Outer Diameter (mm)
80	Busbar Inner Diameter (mm)

