

Support - Single



Busbar Support Assembly (Sliding Type)



PLP roller supports are designed for mounting on disconnecter palms or post insulators. Standard centre heights are 130mm over mounting palm to busbar centreline - up to busbar diameter of 141mm.

Part Number	Busbars Outer Ø (mm)	Base Size L x W x H (mm)	Hole Diameters and Centres			
			No.5	No.8	76 P.C.D.	127 P.C.D.
BBSA-080-R	80	150 x 130 x 12			14mm Holes	18mm Holes
BBSA-02	100	180 x 130 x 12			14mm Holes	18mm Holes
BBSA-02A	100	180 x 130 x 12		18mm Holes		
BBSA-04	100	180 x 130 x 12	14mm Holes			
BBSA-125-R	125	200 x 130 x 12	14mm Holes	14mm Holes	14mm Holes	18mm Holes
BBSA-141-R	141	240 x 150 x 12				18mm Holes
BBSA-160-R	160	225 x 225 x 20				18mm Holes

Please contact PLP for various other sizes and styles

Busbar Fixed Support (Weld-on U-Type)



Part Number	Busbar Outer Ø (mm)	P.C.D
BBFS-080-#	80	#
BBFS-100-#	100	#
BBFS-125-#	125	#
BBFS-141-#	141	#
BBFS-200-#	200	#

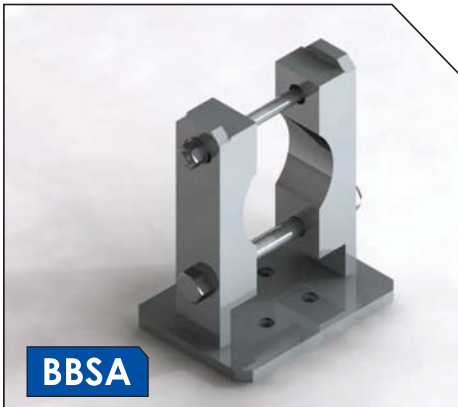
PART NUMBER SYSTEM

BBFS Busbar Fixed Support U-Type
 080 Busbar Outer Diameter (mm)
 # P.C.D. (76 or 127)

Support - Single



Busbar Support Assembly (Clamp Type)



BBSA

Available for the range of Busbar diameters below, with hole diameters and centres listed.

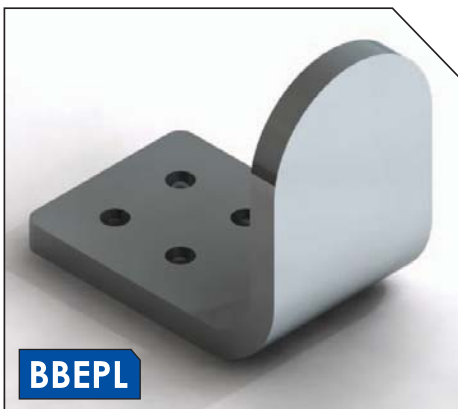
Available in the following three designs

- U - Type
- Clamp Type
- L - Type

Part Number	To Suit Bus Bar Ø (mm)	Base Size L x W x H (mm)	Hole Diameters and Centres				
			No.5	No.8	76 P.C.D.	127 P.C.D.	No.9
BBSA-080-F	80	150 x 130 x 12			14mm Holes	18mm Holes	
BBSA-01	100	180 x 130 x 12			14mm Holes	18mm Holes	
BBSA-100-F	100	180 x 130 x 12					14mm Holes
BBSA-125-F	125	200 x 130 x 12	14mm Holes	14mm Holes	14mm Holes	18mm Holes	
BBSA-141-F	141	240 x 150 x 12				18mm Holes	
BBSA-160-F	160	225 x 225 x 20				18mm Holes	

Please contact PLP for various other sizes and styles

Busbar End Palm (L-Type)



BBEPL

Can be used as an end cap palm and or fixed support

Part Number	Busbar Outer Ø (mm)	Palm Type
BBEPL-080-AS#	80	AS#
BBEPL-100-AS#	100	AS#
BBEPL-125-AS#	125	AS#
BBEPL-141-AS#	141	AS#
BBEPL-160-AS#	160	AS#

PART NUMBER SYSTEM

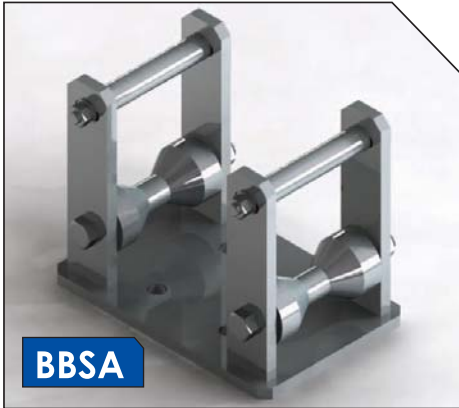
BBEPL	Busbar End Palm L-Type
080	Busbar outer Diameter
AS#	Palm Type E.g. AS1, AS2 etc...

Example: BBEP-080-AS5

Support - Double



Busbar Support Assembly (Double)



Roller/Roller

Double supports are designed to be mounted on Post insulators where busbars need to be connected via flexible connectors. Standard centre heights are 130mm over mounting palm to busbar centreline – up to busbar diameter of 141mm.

Double Supports are available in the following three designs

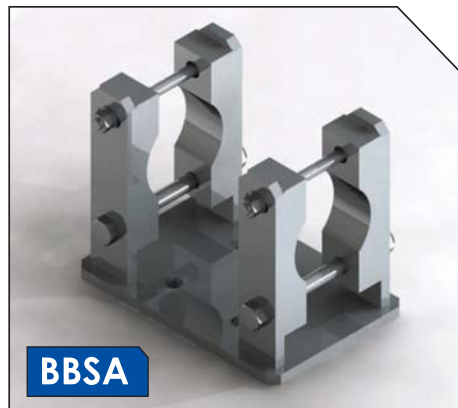
- Roller/Roller
- Roller/Fixed
- Fixed/Fixed

Part Number	To Suit Busbar Ø (mm)	Support type	Base Size L x W x H (mm)	Hole Diameters and Centres			
				No.5	No.8	76 P.C.D.	127 P.C.D.
BBSA-05	100	Roller/Roller	270 x 180 x 12			14mm Holes	18mm Holes
BBSA-100-FF	100	Fixed/Fixed	270 x 180 x 12				18mm Holes
BBSA-100-RF	100	Roller/Fixed	270 x 180 x 12				18mm Holes
BBSA-100-RR	100	Roller/Roller	400 x 225 x 12				18mm Holes
BBSA-125-RR	125	Roller/Roller	270 x 200 x 20	18mm Holes	18mm Holes		18mm Holes
BBSA-141-RF	141	Roller/Fixed	250 x 240 x 12				18mm Holes
BBSA-141-RR	141	Roller/Roller	250 x 240 x 12				18mm Holes
BBSA-160-RR	160	Roller/Roller	270 x 200 x 20				18mm Holes

Please contact PLP for various other sizes and styles



Roller/Fixed



Fixed/Fixed