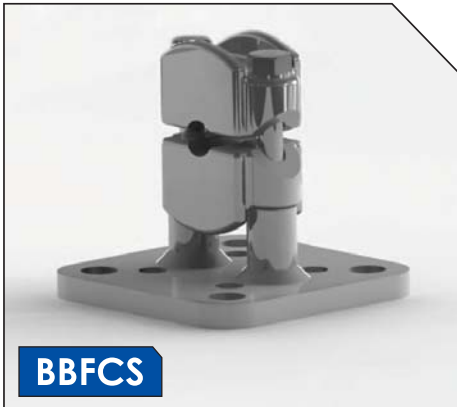


Supports



Busbar Fixed Conductor Support



BBFCS

Part Number	Conductor Diameter Range (mm)	P.C.D. (mm)	Hole Ø (mm)
BBFCS-175-127-76	13.5 - 19.5	127 and 76	18/14
BBFCS-210-127-76	19.6 - 24.1	127 and 76	18/14
BBFCS-270-127-76	24.1 - 30.0	127 and 76	18/14
BBFCS-315-127-76	30.1 - 35.0	127 and 76	18/14

PART NUMBER SYSTEM

BBFCS	Busbar Fixed Conductor Support
175	Conductor Outer Diameter
127	P.C.D.
76	P.C.D.

Bolted Run Post Insulator



BRPI

The BRPI is a heavier duty version of the BBFCS

Part Number	Conductor Ø Range (mm)	P.C.D mm	Hole Ø mm
BRPI-175-127-14	13.5 - 19.5	127	14
BRPI-210-127-14	19.6 - 24.0	127	14
BRPI-270-127-14	24.1 - 30.0	127	14
BRPI-338-127-14	30.1 - 35.0	127	14
BRPI-175-127-18	13.5 - 19.5	127	18
BRPI-210-127-18	19.6 - 24.0	127	18
BRPI-270-127-18	19.6 - 24.1	127	18
BRPI-293-127-18	24.1 - 30.0	127	18
BRPI-338-127-18	30.1 - 35.0	127	18

PART NUMBER SYSTEM

BRPI	Bolted Run Post Insulator
175	Conductor Outer Diameter
127	P.C.D.
14	Hole Ø

Double Conductor Run (Insulator Post)



DCRIP

The DCRIP is a double version of the BRPI

Part Number	Conductor Diameter (mm)	Conductor Spacing (mm)	P.C.D. (mm)
DCRIP-293-74-127	29.3	74	127
DCRIP-338-74-127	33.8	74	127
DCRIP-355-74-127	35.5	74	127

PART NUMBER SYSTEM

DCRIP	Double Conductor Run Insulator Post
293	Conductor Outer Diameter
74	Conductor Spacing
127	P.C.D.

Supports



Substation Parallel Spacer Double (Post Insulator Mounted)



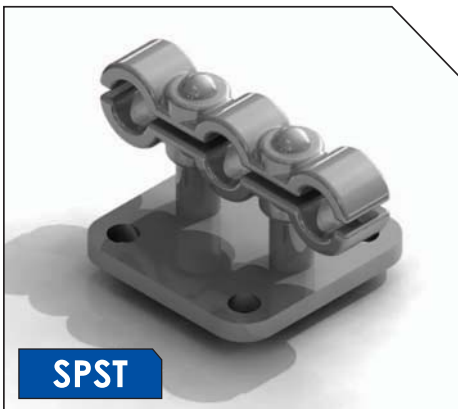
SPSD

Part Number	Conductor Diameter (mm)	Conductor Centre Spacing (mm)	P.C.D. (mm)	Hole Ø (mm)
SPSD-240-050PI	24.0	50.0	127 and 76	18/14
SPSD-263-070PI	26.3	70.0	127 and 76	18/14
SPSD-293-125-PI	29.3	125.0	127 and 76	18/14
SPSD-315-070PI	31.5	70.0	127 and 76	18/14
SPSD-315-125PI	31.5	125.0	127 and 76	18/14

PART NUMBER SYSTEM

SPSD	Substation Parallel Spacer Double
240	Conductor Outer Diameter
050	Conductor Centre Spacing
PI	Post Insulator Mounted (76/127PCD)

Substation Parallel Spacer Triple (Post Insulator Mounted)



SPST

Part Number	Conductor Diameter (mm)	Conductor Centre Spacing (mm)
SPST-315-070PI	31.5	70.0

PART NUMBER SYSTEM

SPST	Substation Parallel Spacer Triple
315	Conductor Outer Diameter
070	Conductor Centre Spacing
PI	Post Insulator Mounted (76/127PCD)

Substation Parallel Spacer Quad (Post Insulator Mounted)



SPSQ

Part Number	Conductor Diameter (mm)	Conductor Centre Spacing (mm)	P.C.D. (mm)	Hole Ø (mm)
SPSQ-293-070PI	29.3	70	127 and 76	18/14

PART NUMBER SYSTEM

SPSQ	Substation Parallel Spacer Quad
240	Conductor Outer Diameter
070	Conductor Centre Spacing
PI	Post Insulator Mounted (76/127PCD)



PREFORMED LINE PRODUCTS
(THAILAND) LTD.