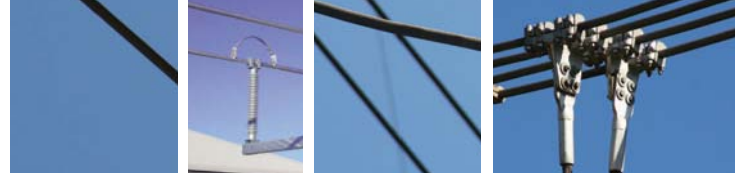


# Parallel Groove Clamps

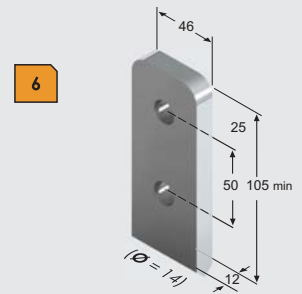
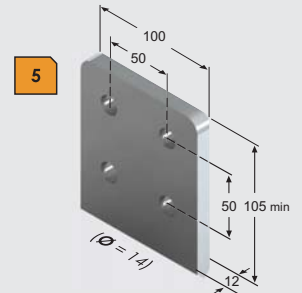
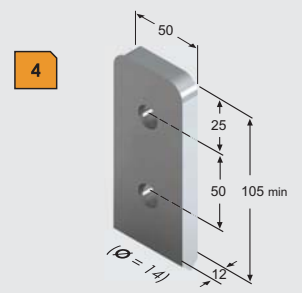
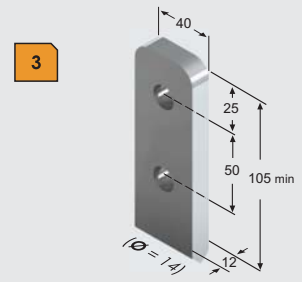


## Aluminium Parallel Groove (Clamp)



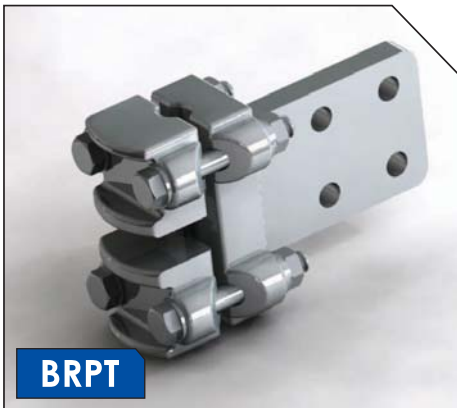
Many parallel groove clamps are available tin plated for use with copper conductor. Please contact PLP for your specific requirements.

Part Number	Clamp Diameters (mm)	Material
APG-135	5.25 - 13.5	Al
APG-188DG	8.0 - 19.0	Al
APG-188SG	9.0 - 19.0	Al
APG-263104-T	10.4 - 26.3	Tinned Al
APG-163105-T	10.5 - 16.3	Tinned Al
APG-210DG	12.0 - 22.0	Al
APG-315-315-2	16.3 - 33.8	Al
APG-263165-T	16.5 - 26.3	Tinned Al
APG-338165-T	16.5 - 33.8	Tinned Al
APG-238-238	22.0 - 24.0	Al
APG-293-293-1	27.0 - 30.0	Al
APG-315-338-1	31.5 - 33.8	Al



# Bolted Connections

## Bolted Run Palm Tap



Part Number	Conductor Ø (mm)	Palm Type
BRPT-175-AS#	13.5-19.5	AS#
BRPT-210-AS#	19.6-24.0	AS#
BRPT-263-AS#	24.1-30.0	AS#
BRPT-338-AS#	30.1-35.0	AS#
BRPT-380-AS#	38.0	AS#
BRPT-396-AS#	39.6	AS#

### PART NUMBER SYSTEM

BRPT Bolted Run Palm Tap  
 175 Conductor Outer diameter  
 AS# Palm Type E.g AS1, AS2, AS3 etc...

Example: BRPT-163-AS5

